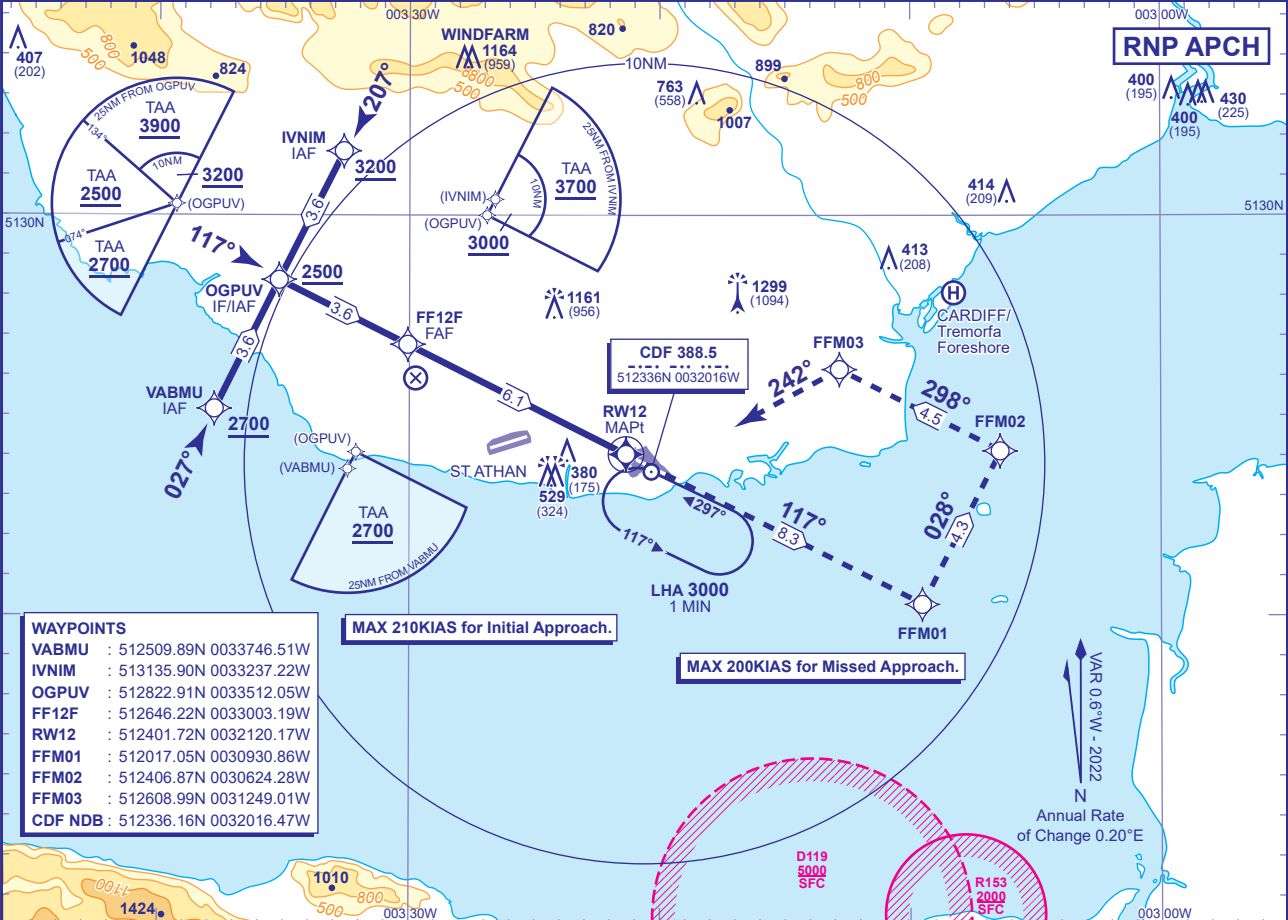


INSTRUMENT APPROACH - ICAO

CARDIFF
RNP
RWY 12
(ACFT CAT A,B,C,D)

	APP 119.155, 125.855	CARDIFF APPROACH	AD ELEVATION 220
	TWR 133.105	CARDIFF TOWER	THR ELEVATION 205
	RAD 125.855	CARDIFF RADAR	OBSTACLE ELEVATION 1299 AMSL (1094) (ABOVE THR)
	119.155 (LARS)		
ATIS 132.480	CARDIFF INFORMATION	BEARINGS ARE MAGNETIC	MIN TEMP -10°C
			TRANSITION ALTITUDE 6000



- WAYPOINTS**
- VABMU : 512509.89N 0033746.51W
 - IVNIM : 513135.90N 0033237.22W
 - OGPUV : 512822.91N 0033512.05W
 - FF12F : 512646.22N 0033003.19W
 - RW12 : 512401.72N 0032120.17W
 - FFM01 : 512017.05N 0030930.86W
 - FFM02 : 512406.87N 0030624.28W
 - FFM03 : 512608.99N 0031249.01W
 - CDF NDB : 512336.16N 0032016.47W

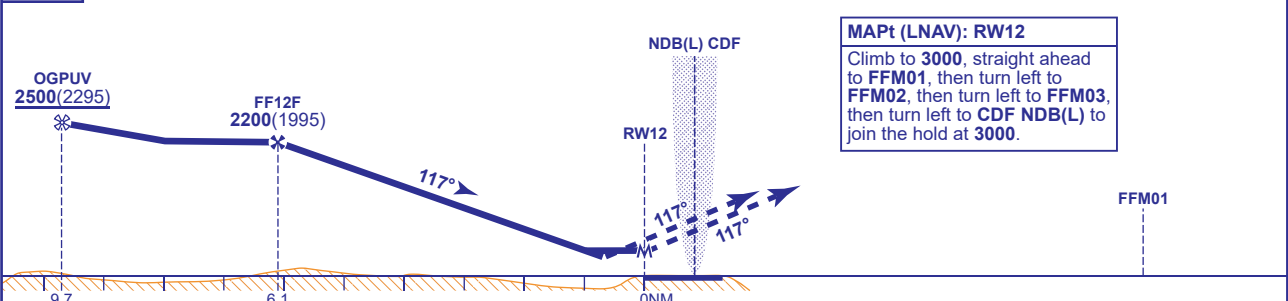
MAX 210KIAS for Initial Approach.

MAX 200KIAS for Missed Approach.

RECOMMENDED PROFILE VERTICAL PATH ANGLE 3.0% (LNAV 5.2%), 320FT/NM

NM to RW12	6	5	4	3	2	1
ALT(HGT)	2170(1965)	1850(1645)	1530(1325)	1210(1005)	890(685)	570(365)

TCH 50



MAPt (LNAV): RW12
Climb to 3000, straight ahead to FFM01, then turn left to FFM02, then turn left to FFM03, then turn left to CDF NDB(L) to join the hold at 3000.

Aircraft Category		A	B	C	D	Rate of descent	G/S KT	160	140	120	100	80
OCA (OCH)	LNAV	590(385)	590(385)	590(385)	590(385)		FT/MIN	850	740	640	530	420
	LNAV/VNAV	460(255)	470(265)	480(275)	490(285)							
VM(C)OCA (OCH AAL)	Total Area	680(460)	820(600)	1560(1340)	1690(1470)							
	SW of RWY 12/30	680(460)	820(600)	920(700)	920(700)							

NOTE NDB(L) CDF required for missed approach hold.

CHANGE (12/21): EGNOS AND LPV REMOVED.